



# Graphic Era Hill University

DEHRADUN • BHIMTAL • HALDWANI

Join  
a Legacy of  
Excellence!

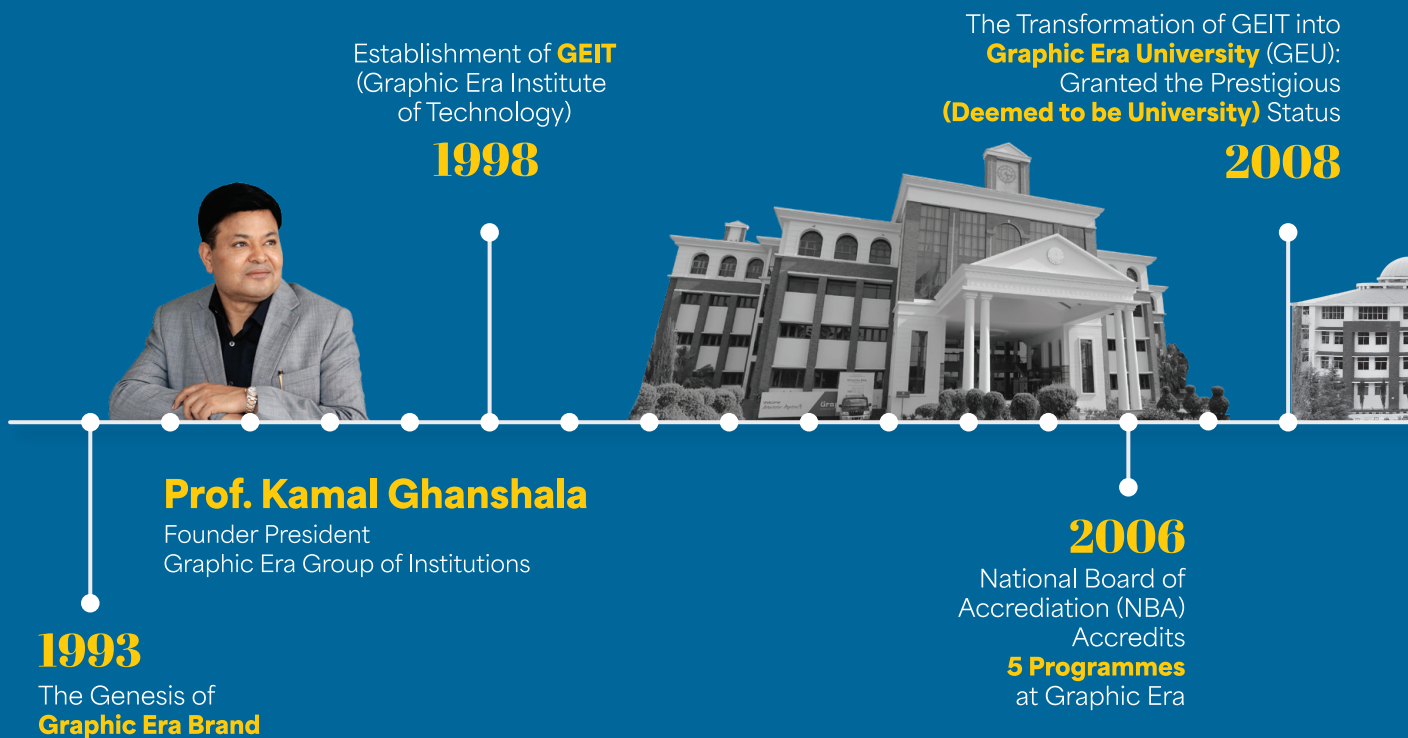
[Brochure 2025-26 >>](#)



# Graphic Era

*Transforming dreams into reality*

**Graphic Era Group of Institutions** is a renowned education conglomerate committed to excellence in academics, innovation, and holistic development. With a legacy spanning decades, it encompasses premier universities offering diverse programs in engineering, management, computer applications, biotechnology, and more, alongside a medical college, school, and hospital. Recognized globally for its research, infrastructure, and top-tier faculty, the Group continues to shape future leaders and drive societal progress.





# Building a Legacy, One Milestone at a Time



GEU Achieves **NAAC**  
(National Assessment and  
Accreditation Council)  
**'A' Grade** with the  
Third-Highest Score  
Nationwide **(3.23/4)**

**2015**

Ranked in the NIRF  
(National Institutional Ranking Framework)  
**Top 100** for Engineering  
and Universities categories

Established GEHU's  
**Haldwani Campus.**

**2020**

**Ranked 55** among  
India's Top 100  
Universities by NIRF.

Globally ranked among the Top 601-800  
Universities and Top 301-400 Engineering  
Institutes by Times Higher Education  
(THE) Rankings.

**2023**

GEU achieves  
**NAAC A+ Grade**  
**2022**

**2011**

Establishment of  
**Graphic Era Hill University**  
(GEHU):  
Campuses in Dehradun  
and Bhimtal



**2018**

Conferred **Regular  
Deemed University**  
Status by the  
Ministry of Education

**2021**

Establishment  
of **Graphic Era  
Hospital,**  
a Landmark in  
Healthcare  
Excellence.

**2024**

Launch of  
**Graphic Era  
Institute of  
Medical  
Sciences**  
(GEIMS),

Ranked Among the  
**Top 100 Universities**  
in India for the  
Second  
Consecutive Year.

**Ranked 52**  
among  
India's Top 100  
Universities by  
NIRF,

**110+ Patents  
Granted,**  
the Highest in  
India, with  
₹43+ Cr in  
Research Grants  
and 1000+  
Published Patents



# Welcome to Graphic Era Hill University

We are thrilled that you are considering Graphic Era Hill University for your academic journey. With campuses in Dehradun, Bhimtal, and Haldwani, our programs are distinguished for their exceptional teaching and research standards. Our university consistently ranks among the top institutions in the region, with a commitment to fostering academic excellence, nurturing creativity, and addressing critical global challenges. At Graphic Era Hill University, we encourage innovative thinking and aim to equip students with the skills and knowledge to shape the future.



**40+**

International  
Interns & Students  
on Campus

**20+**

International  
Partner  
Universities

**10+**

Countries where MBAs  
have travelled for  
Global & Career Immersion  
Programs

**25%**

Tuition Fee  
Waiver for Hill  
State Candidates

Upto

**70%**

Merit Based Scholarships

**10%**

Additional Fee Concession  
for Female Candidates

**5%**

Tuition Fee Waiver for  
Wards of Defence  
Personnel

**₹2,00,000**

Cover for Group  
Health Insurance





# Dehradun Campus

**Dehradun campus** is located in the cantonment area, along the Rajaji National Park against the panoramic view of Shivalik Hills. The University offers perfect ambience for all academic pursuits, health growth and widening of mental horizons. GEHU — Dehradun campus is fully equipped with state-of-the-art computer centres and labs, spacious and temperature regulated class rooms, lecture theatres and seminar halls, accommodation and medical facilities and our very own radio station.

The Dehradun Campus of Graphic Era Hill University has been acclaimed and honored at various events of national and international prominence.

 Society Area, Bell Road, Clement Town,  
Dehradun, Uttarakhand

 **18008906027**

 [www.gehu.ac.in](http://www.gehu.ac.in)





# Bhimtal Campus



# Haldwani Campus

**11th**  
MOST BEAUTIFUL  
CAMPUS IN THE  
COUNTRY

BY **S.** STORYPICK.

Graphic Era Hill University, **Bhimtal campus** is located at the Kumaon foothills of the outer Himalayas amidst lush green tree

cover, along the Sattal Road. It has been designed as a self contained community with a cademic and research facilities, laboratories, libraries and administrative offices all in the same campus. Campus provides various facilities like students accommodation, Open Air Theatre, cafeteria, play fields, library and computer centers, fully equipped and well designed lecture theatres.

Bhimtal is well connected to all major cities of India, by road and rail, with the nearest railway station being Kathgodam which is 27 kms from Bhimtal Campus. By road, Bhimtal is about 300 kms from Delhi, 16 kms from Nainital and 310 kms from Dehradun.


 Sattal Road, Bhimtal, Nainital, Uttarakhand

 **05942-270005, +91-8126107820**


 [bhimtal.gehu.ac.in](http://bhimtal.gehu.ac.in)

Graphic Era Hill University, **Haldwani campus**, the mesmerizing gateway to Kumaon, is situated in the vibrant and largest commercial market of the state and is a wonderful Fusion of the bliss of Mother Nature and the exciting bustle of an up and coming city.

With courses in various disciplines, ranging from engineering, science, and technology, business and management studies, hospitality, and humanities, we welcome ambitious and enthusiastic students seeking a serene college experience and promise every student an educative and pedagogic experience of a lifetime.

 Tularampur, Near Mahalaxmi Temple, Opp. Middas Squar, Haldwani, Uttarakhand

 **+91-8755973405, 9528258960**

 [haldwani.gehu.ac.in](http://haldwani.gehu.ac.in)





# Thrills, Talent, and Togetherness


At Graphic Era, every moment on campus is a celebration of energy, creativity, and camaraderie. From the electrifying Grafest—an annual spectacle of music, dance, and cultural performances—to exhilarating sports tournaments and student-led club activities, our campus pulses with life year-round. With initiatives like Hackathons, Literary Fests, and Innovator Showcases, there's no limit to what you can explore and achieve. Whether pursuing your passion, building life skills, or simply making unforgettable memories, Graphic Era offers a dynamic environment that's as vibrant as its diverse student community.





# Top -Tier Offers

Join the brilliant and dynamic community of learning at Graphic Era, the university that prides itself on preparing the students for their future.



**Neha Bhatt**  
B.Tech CSE  
Batch 2025  
**ATLISSIAN**  
**₹61.99L**



**Chandni M.**  
B.Tech CSE  
Batch 2024  
**amazon**  
**₹47.88L**



**Shreya S.**  
B.Tech CS (ML & AI)  
Batch 2024  
**amazon**  
**₹47.88L**



**Parul Singh**  
B.Tech CSE  
Batch 2024  
**amazon**  
**₹47.88L**



**Ikshit Dhyani**  
B.Tech CSE  
Batch 2025  
**amazon**  
**₹47.88L**



**Epsita Mukherjee**  
B.Tech CSE  
Batch 2024  
**PayPal** **₹34.40L**



**Prakhar Dhyani**  
B.Tech CSE  
Batch 2024  
**PayPal** **₹34.40L**



**Sachin Upadhyay**  
B.Tech CSE  
Batch 2025  
**PayPal** **₹32.90L**



**Karan Matiyali**  
B.Tech CSE  
Batch 2025  
**VISA** **₹32.88L**



**Mayank Joshi**  
B.Tech CSE  
Batch 2025  
**VISA** **₹32.88L**

**2270+**  
offers made by  
**250+ recruiters** in  
last 1 year and the  
count is still on



MBA • 2018-20

## Deeksha Naithani

BDM,  
Square Yards,  
Abu Dhabi



MBA • 2018-20

## Vivek Kharodia

Actor, Model  
& Film Maker -  
Bollywood



B.Tech • 2011-15

## Yashasvi Makin

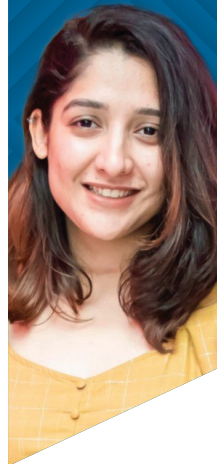
Software  
Development  
Engineer - 2,  
Amazon.com



MBA • 2018-20

## Akanksha Dhyani

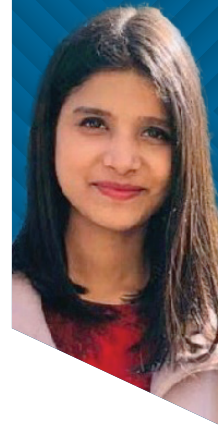
Software  
Engineer - 2  
Adobe



MBA • 2018-20

## Bhawna Gaur

Software  
Engineer-2  
Adobe



MBA • 2018-20

## Rishabh Aggarwal

SAP Labs



## Global Trailblazers

### Our alumni, shaping the world one success story at a time.

Graphic Era takes immense pride in its alumni, who are making a remarkable impact across the globe. They are trailblazers in their respective fields, contributing to a variety of industries with unparalleled dedication and ingenuity. From innovators leading groundbreaking research to entrepreneurs building transformative businesses, and corporate leaders steering global enterprises, our graduates have become true ambassadors of excellence.

Their achievements are a testament to the robust education, rigorous training, and unwavering support they received during their time at Graphic Era. The foundation built here has enabled them to excel, not just professionally but also as leaders and changemakers who inspire others to dream bigger and achieve more.

Whether it's pioneering advancements in technology, driving social impact, or contributing to the arts and sciences, our alumni stand as shining examples of what a Graphic Era education can achieve. They continue to inspire the next generation of students, proving that with the right guidance and determination, there are no limits to what can be accomplished.

This legacy of success reflects our university's steadfast commitment to nurturing talent, fostering innovation, and instilling values that transcend boundaries. Graphic Era alumni not only succeed—they redefine success itself, leaving an indelible mark on the world and elevating the reputation of their alma mater wherever they go.

# Courses Offered

Course Availability —

● Dehradun Campus ● Bhimtal Campus ● Haldwani Campus

## B.Tech — 4 Years

### Computer Science & Engineering (CSE) ● ● ●

#### Specialisations Offered

- ● ● CSE (Artificial Intelligence & Machine Learning)
- ● ● CSE (Cyber Security)
- ● ● CSE (Artificial Intelligence & Data Science)

### Mechanical Engineering (ME) ● ●

#### Specialisations Offered

- ● ME (H) Electric Vehicle
- ● ME (H) Mechatronics
- ● ME (H) Automobile
- ● ME (H) Robotics and Automation

### Civil Engineering (CE) ● ●

#### Specialisations Offered

- ● CE (Construction Management)
- ● CE (GIS and Remote Sensing)
- ● CE (H) Environmental Engineering
- ● CE (H) Geoinformatics

### Electronics & Communication Engineering (ECE) ● ●

#### Specialisations Offered

- ● ECE (Hons.) VLSI

#### Eligibility: XII with PCM

Merit prepared on basis of XII Agg. Percentage and National qualifying exam (JEE Mains/ Advanced)

## M.Tech — 2 Years

### Computer Science & Engineering (CSE) ● ● ●

Eligibility: MCA / BE (ECE/IT/CSE/EE) / B.Tech (EC/IT/CSE/EE) / M.Sc (CS/IT)

Merit prepared on basis of qualifying exam

### Mechanical Engineering (ME) - Electrical Vehicle ●

Eligibility: B.E/B.Tech in Automobile/Mechanical/EEE/E&I/ECE/Mechatronics/Manufacturing Engineering

Merit prepared on basis of qualifying exam

## BHM — 4 Years / CCHM — 1 Year

### Bachelor of Hotel Management (BHM) ●

### Certificate Course in Hotel Management (CCHM) ●

Eligibility: XII in any stream

Merit prepared on basis of XII Agg. Percentage

## BA(JMC) / BA(JMC) (H) — 3/4 Years

## MA(JMC) — 1/2 Years

### BA in Journalism & Mass Communication ● ●

### BA in Journalism & Mass Communication (H) ● ●

Eligibility: XII in any stream

Merit prepared on basis of XII Agg. Percentage

### MA in Journalism & Mass Communication ●

Eligibility: For 2 Year: Graduation in any stream; For 1 Year: BA(JMC) Hons.

Merit prepared on Graduation Percentage

## BBA/BBA (H) — 3/4 Years

## MBA — 2 Years

### Bachelor of Business Administration (BBA) ● ● ●

### BBA International Finance & Accounting with ACCA ●

### BBA (H) Artificial Intelligence & Data Science ●

### BBA (H) E-Commerce & Digital Marketing ●

### BBA (H) Hospital Administration ●

### BBA (H) Entrepreneurship ●

### BBA (H) Aviation Management ●

Eligibility: XII in any stream

Merit prepared on basis of XII Agg. Percentage

### Master of Business Administration - General ● ● ●

#### Specialisations Offered

Marketing, Finance, Human Resource, Logistics & Supply Chain, International Business, Information Technology, Business Analytics, Digital Analytics, Data Analysis, Hospitality Management, Real Estate Management, Retail Management, Banking and Insurance, Branding and Advertising

### MBA - Agri Business Management ● ●

Eligibility: MBA - Graduation in any stream | MBA (ABM) - Graduation in Agriculture/Allied Sciences

Merit prepared on basis of Graduation Percentage & Percentile of relevant qualifying exams (CAT/MAT/XAT/CMAT)

## B.Com (H) — 3/4 Years

## M.Com — 1/2 Years

### Bachelor of Commerce (H) ● ● ●

### Bachelor of Commerce (H) with Research ● ● ●

### B.Com (H) Accounting, Auditing and Taxation ●

### B.Com (H) Banking and Finance ●

### B.Com (H) Corporate Accounting and Financial Analysis with CMA, US ●

### B.Com (H) International Finance & Accounting with ACCA, UK ● ● ●

Eligibility: XII in any stream

Merit prepared on basis of XII Agg. Percentage

### Master of Commerce (M.Com) ●

Eligibility: M.Com (2 Years) - B.Com / B.Com (H) / BA (H) | M.Com (1 Year) - B.Com (H) with Research

Merit prepared on basis of Graduation Percentage

## BBA LLB (H) / BA LLB (H) — 5 Years

## LLM — 1 Year

### BBA LLB (H) ●

### BA LLB (H) ●

### Master of Law (LLM) ●

Eligibility: BBA LLB | BA LLB - XII in any stream;

LLM - Graduation in Law



## B.Sc. Nursing | B.Pharm — 4 Years

### M.Pharm — 2 Years

Bachelor of Science Nursing ●

Bachelor of Pharmacy ● ●

Eligibility: B.Sc. Nursing - XII with PCB; B.Pharm - XII with PCB/PCM

Merit prepared on basis of XII Agg. Percentage

Master of Pharmacy ●

Eligibility: B.Pharm

Merit prepared on basis of Graduation Percentage

## B.Sc. (H) — 4 Years

## M.Sc. — 2 Years

B.Sc. (H) Agriculture ●

Eligibility: XII with PCB/PCM/Agriculture

Merit prepared on basis of XII Agg. Percentage

M.Sc. Agriculture (Agronomy) ●

M.Sc. Agriculture (Genetics & Plant Breeding) ●

M.Sc. Horticulture (Vegetable Science) ●

Eligibility: M.Sc. Agriculture - B.Sc. Agriculture or B.Sc. (H)

Agriculture | M.Sc. Horticulture - B.Sc. Agriculture/

Horticulture or B.Sc. (H) Agriculture/Horticulture

Merit prepared on basis of Graduation Percentage

## BA (H) — 3/4 Years

## MA — 2 Years

Bachelor of Arts (H) English ●

Bachelor of Arts (H) English with Research ●

Eligibility: XII in any stream

Merit prepared on basis of XII Agg. Percentage

Master of Arts English ●

Eligibility: Graduation in any stream

Merit prepared on basis of Graduation Percentage

## B.Sc. (H) — 3/4 Years

## M.Sc. — 2 Years

B.Sc. (H) Mathematics - 3 Years ●

B.Sc. (H) Mathematics with Research - 4 Years ●

B.Sc. (H) Physics - 3 Years ●

B.Sc. (H) Physics with Research - 4 Years ●

B.Sc. (H) Chemistry - 3 Years ●

B.Sc. (H) Chemistry with Research - 4 Years ●

Eligibility: XII with PCM | B.Sc. Chemistry - PCM/PCB

Merit prepared on basis of XII Agg. Percentage

M.Sc Data Science & Statistics ●

M.Sc Physics ●

Eligibility: M.Sc. Data Science & Statistics - BE/B.Tech/B.Sc./

BCA || M.Sc. Physics - B.Tech/B.Sc. with Physics mandatory

Merit prepared on basis of Graduation Percentage

## BCA | B.Sc IT — 3 Years

## BCA (H) | B.Sc CS (H) — 4 Years

Bachelor of Computer Application (BCA) ● ● ●

BCA Industry Integrated ●

BCA Artificial Intelligence & Data Science ● ● ●

BCA Cyber Security ●

BCA (H) Cyber Security ●

BCA (H) Artificial Intelligence & Data Science ●

Bachelor of Science - IT ● ● ●

B.Sc. IT Industry Integrated ●

Bachelor of Science CS (H) Cyber Security ●

ELIGIBILITY: XII any stream

Merit prepared on basis of XII Agg. Percentage

## MCA — 2 Years

Masters in Computer Application (MCA) ● ● ●

MCA (Artificial Intelligence & Data Science) ●

Eligibility: BCA/B.Sc. (IT)/B.Sc. (CS)/B.Voc (CS)

Merit prepared on basis of Graduation Percentage

## B.Des. / BFA — 4 Years

## B.Sc. — 3 Years / M.Sc. — 2 Years (Animation & Gaming / Multimedia)

## MFM / MFA — 2 Years

B.Des. (User Experience & Interaction Design) ●

B.Des. (Animation & Gaming) ●

B.Des. (Fashion Design) ●

Bachelor of Fine Arts (BFA) ●

B.Sc. (Animation & Gaming) ● ●

Eligibility: B.Des./B.Sc - XII with PCB | BFA/B.Des. Fashion Design - XII in any stream

Merit prepared on basis of XII Agg. Percentage

M.Sc. (Animation & Multimedia) ●

Master of Fashion Management (MFM) ●

Master of Fine Arts (MFA) ●

Eligibility: M.Sc. - B.Sc. in Animation | MFM - Graduation in any stream | MFA - BFA/BVA

Merit prepared on basis Graduation Percentage

Polytechnic - CSE, ME, CE ● ● ●

Polytechnic - Automobile Engineering ●

Diploma in Fire & Safety Management ●

Ph.D programs ● ● ●

Course Availability —

● Dehradun Campus ● Bhimtal Campus ● Haldwani Campus

**Graphic Era Hill University,  
Dehradun Campus**

Society Area, Bell Road,  
Clement Town, Dehradun

[admissions@gehu.ac.in](mailto:admissions@gehu.ac.in)  
1800-890-6027

**Graphic Era Hill University,  
Bhimtal Campus**

Sattal Road, Bhimtal, Nainital Road,  
Uttarakhand

[admissions\\_bhimtal@gehu.ac.in](mailto:admissions_bhimtal@gehu.ac.in)  
05942-270005, 81261 07820

**Graphic Era Hill University,  
Haldwani Campus**

Tularampur, Near Mahalaxmi  
Temple, Haldwani

[haldwanicampus@gehu.ac.in](mailto:haldwanicampus@gehu.ac.in)  
87559 73405, 95282 58960



Apply Now



**Graphic Era  
Hill University**  
DEHRADUN • BHIMTAL • HALDWANI

